

Supplementary figures

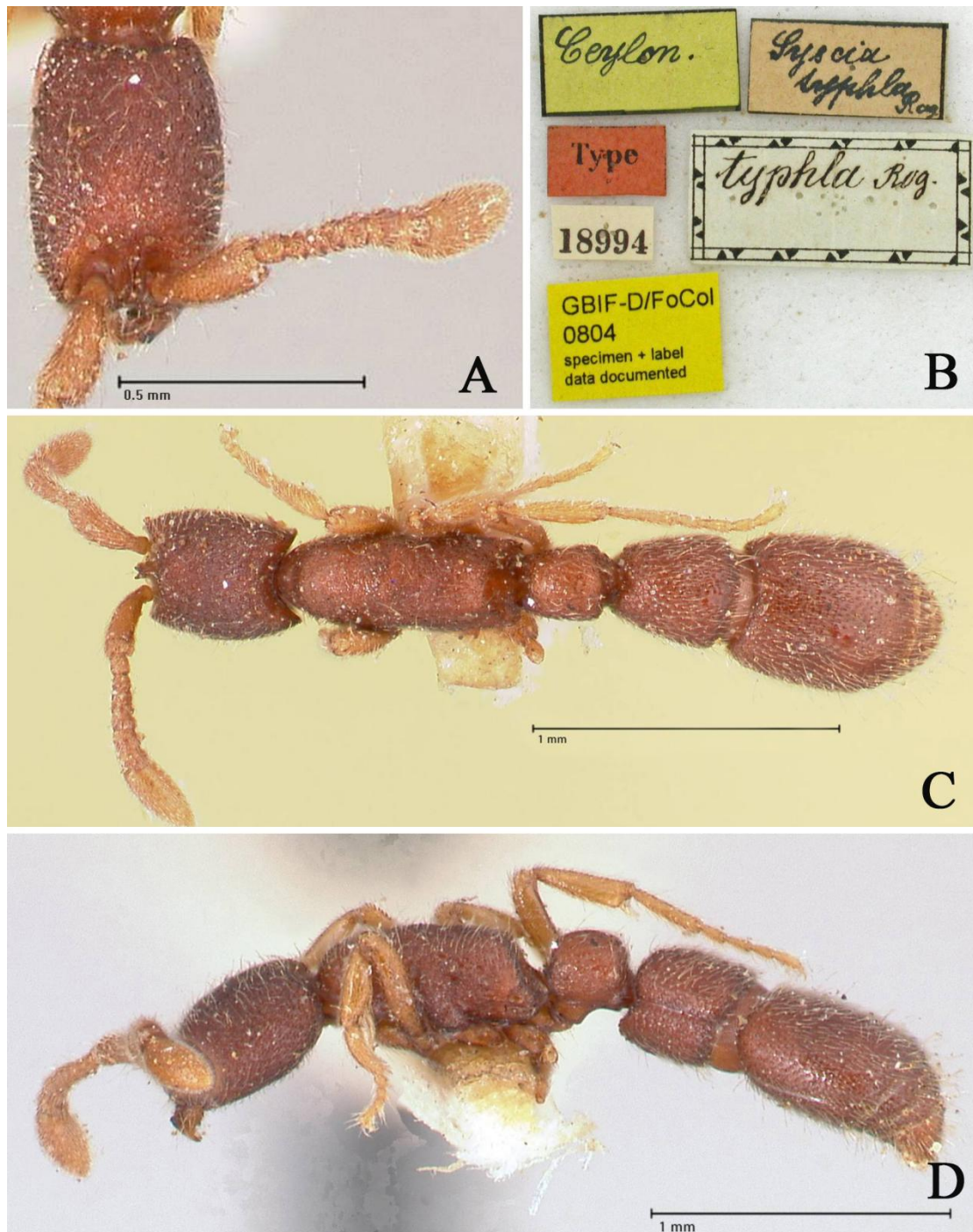


Figure S1. *Syscia typhla* Roger, 1861, holotype, worker (FOCOL0804) **A.** Head in full-face view. **B.** Label. **C.** Body in dorsal view. **D.** Body in lateral view (images cited from <https://www.antweb.org>; imaged by Christiana Klingenberg).



Figure S2. *Syscia reticularis* Jaitrong, Wiwatwitaya & Yamane, 2020, holotype, worker (THNHM-I-02624) **A.** Head in full-face view. **B.** Label. **C.** body in dorsal view. **D.** Body in lateral view (images cited from <https://www.antweb.org>; imaged by Yudthana Samung).

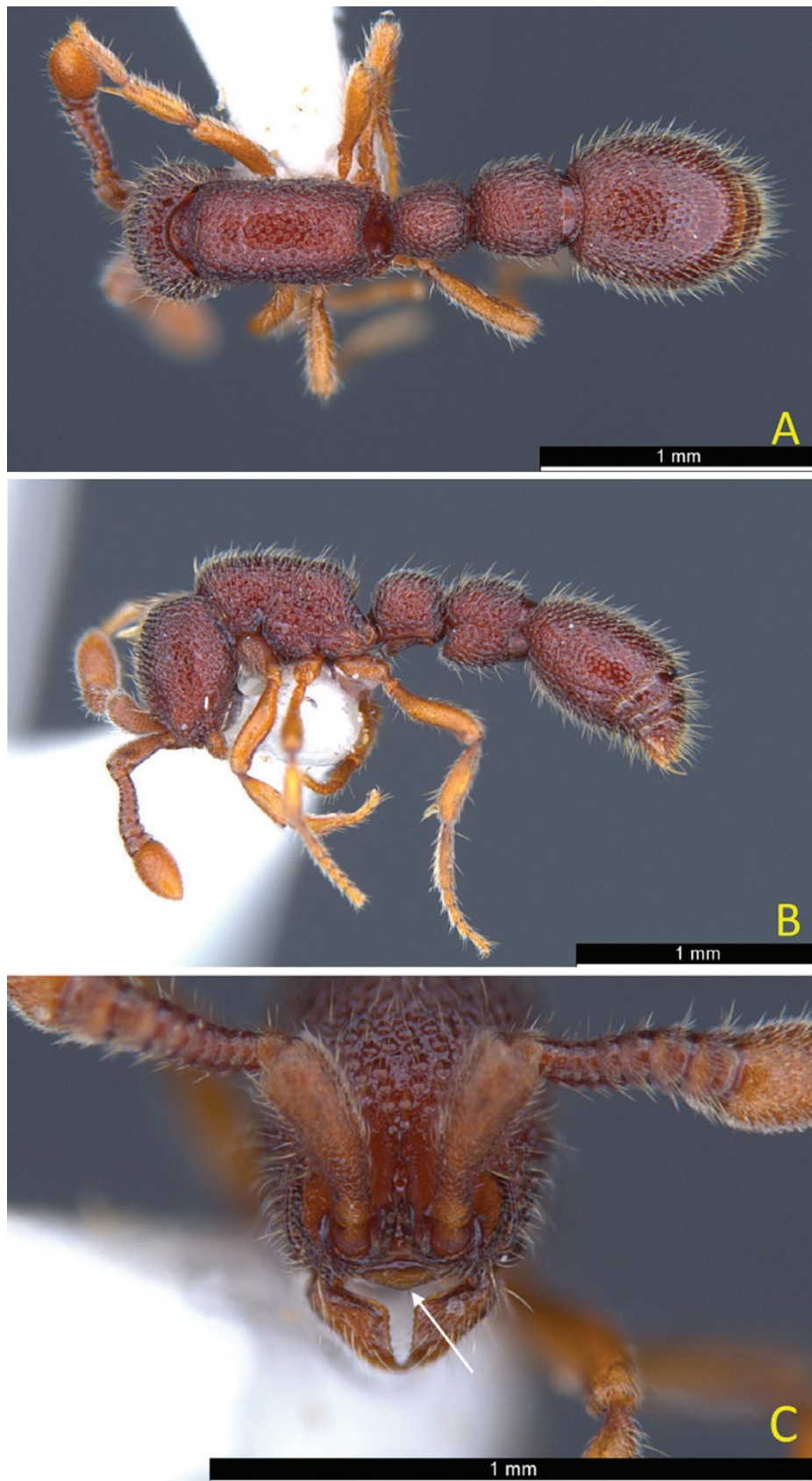


Figure S3. *Sycia sabahna* Yamane & Mizuno 2024 paratype, worker **A.** habitus in dorsal view **B.** habitus in profile view **C.** head in full-face view (images cited from Yamane & Mizuno 2024).

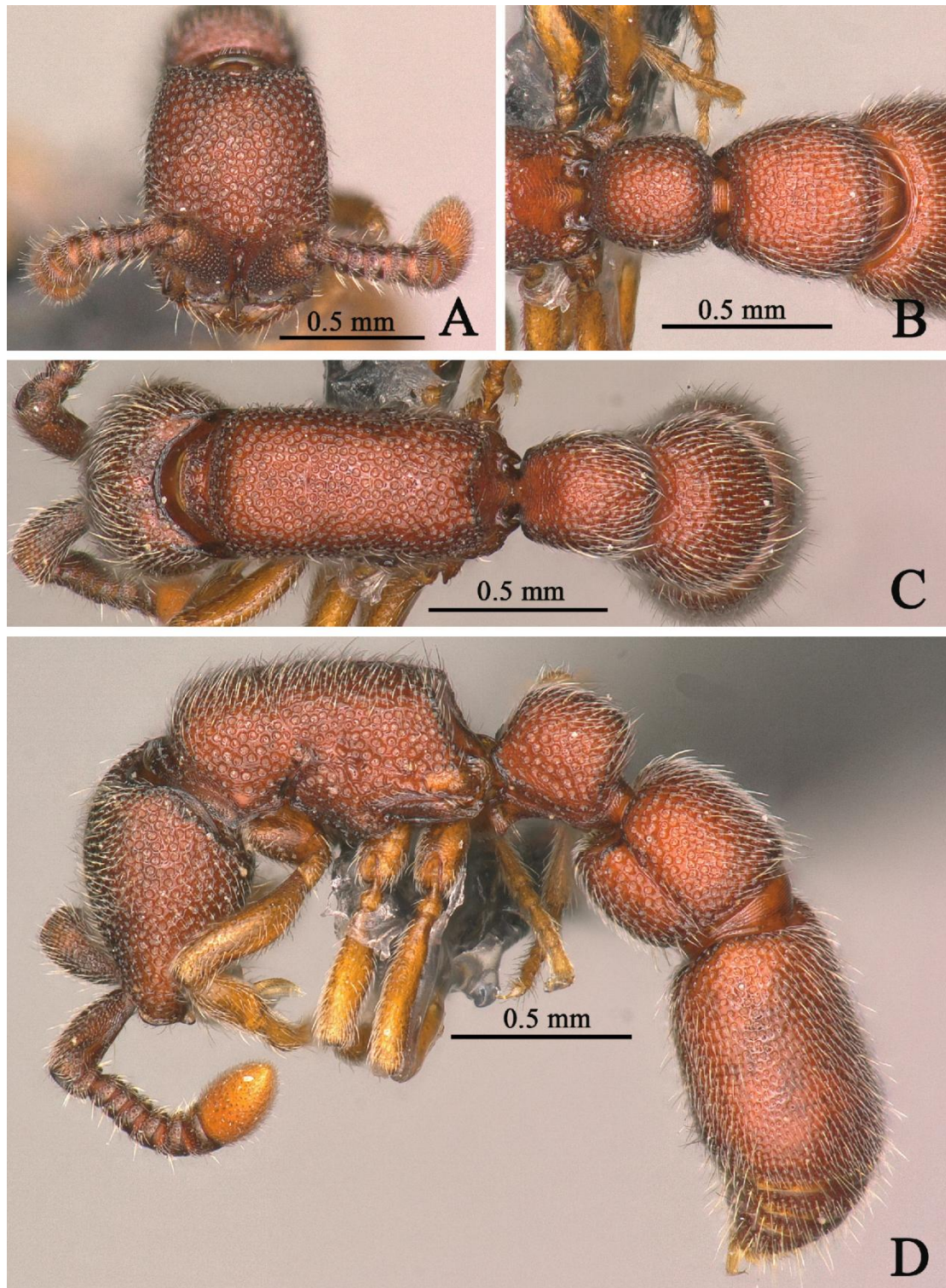


Figure S4. *Syscia zhoui* Du et al. 2024 holotype, worker (GXNU160017). **A.** Head in full-face view. **B.** Petiole and postpetiole in dorsal view. **C.** Mesosoma in dorsal view. **D.** Body in lateral view (imaged by Zhilin Chen).

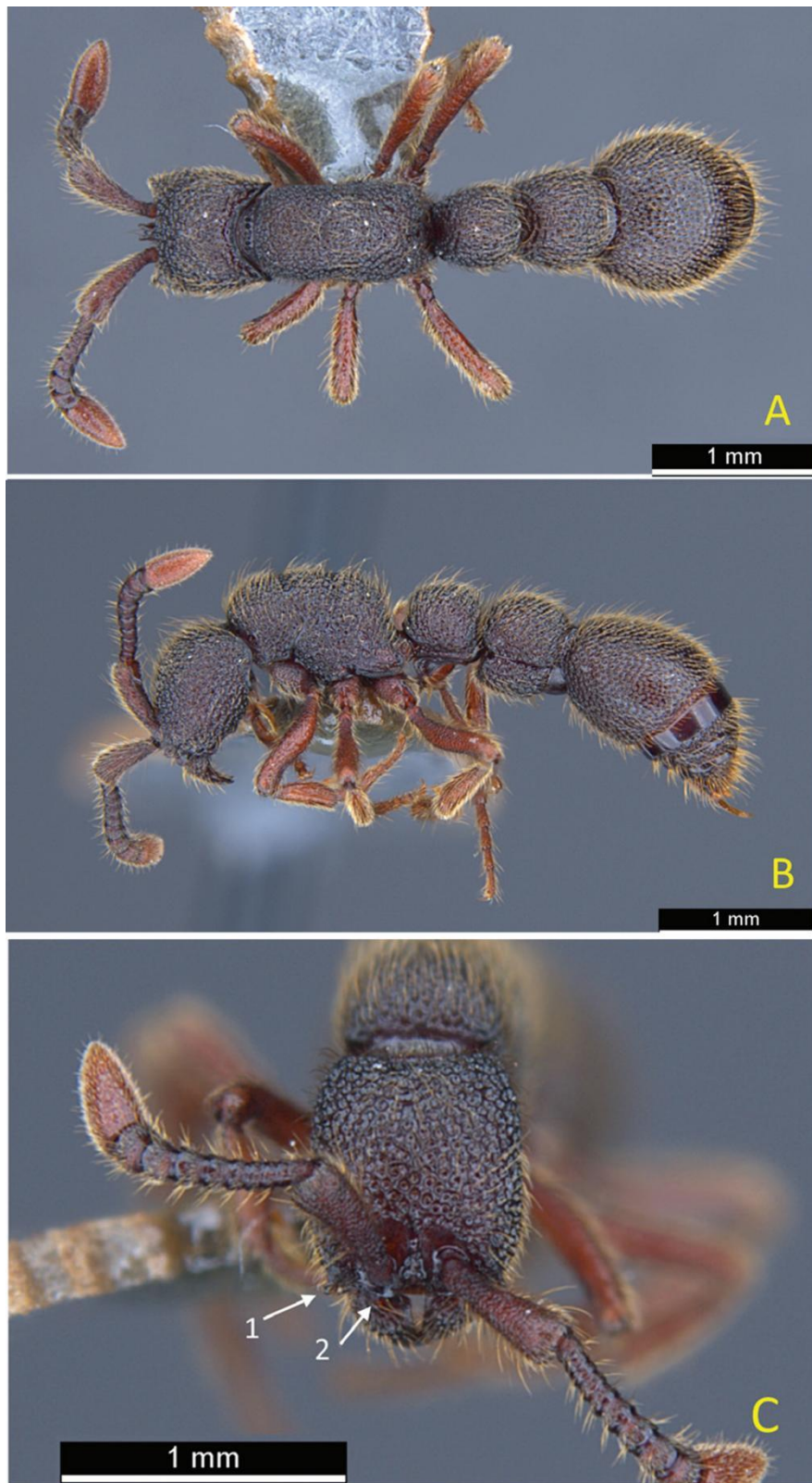


Figure S5. *Sycia yekzoeae* Yamane & Mizuno 2024 paratype, worker **A.** habitus in dorsal view **B.** habitus in profile view **C.** head in full-face view (images cited from Yamane & Mizuno 2024).

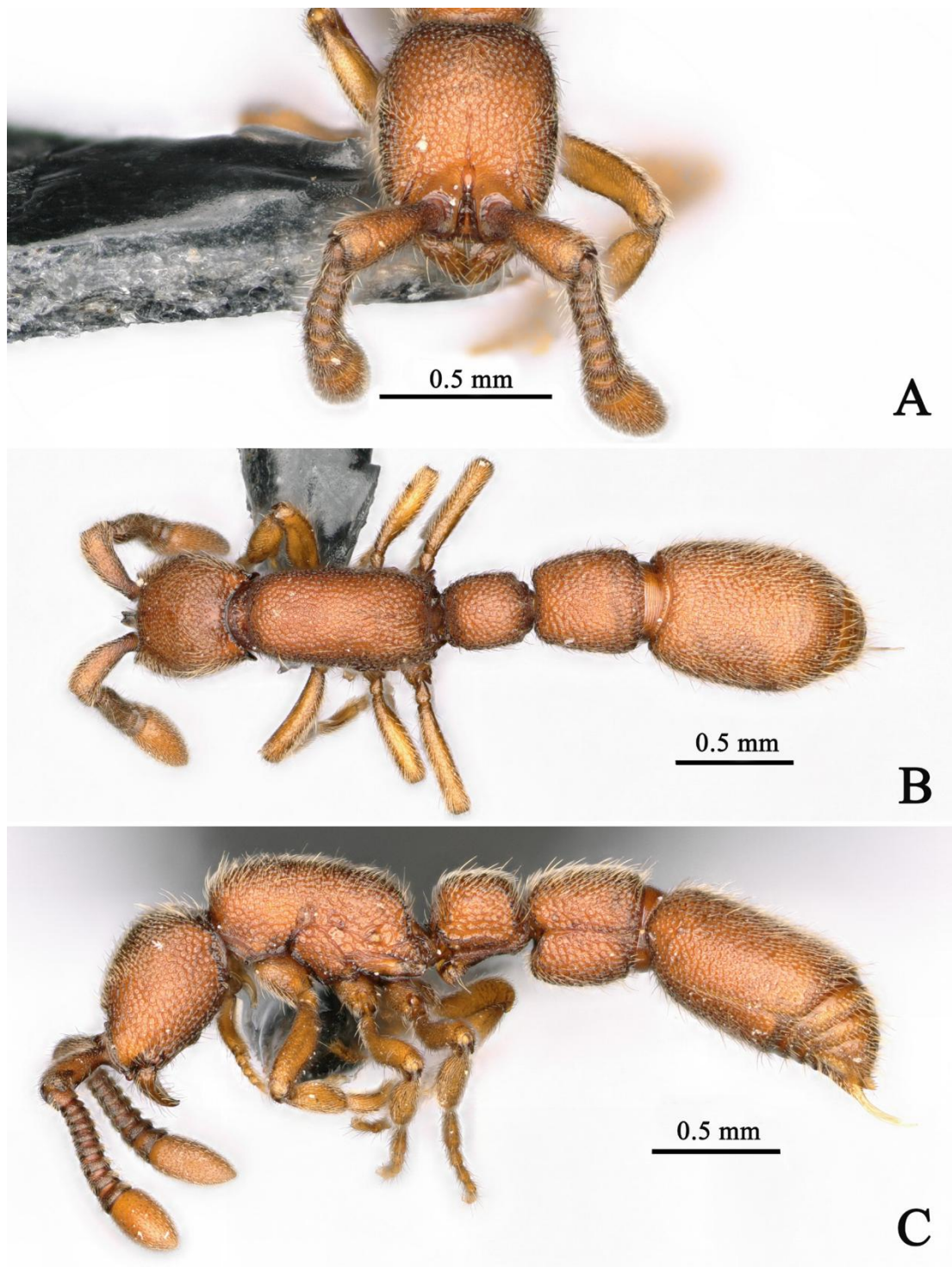


Figure S6. *Sycia arcodorsa* Du et al. 2024, holotype, worker (GXNU210848). **A.** Head in full-face view. **B.** Body in dorsal view. **C.** Body in lateral view (imaged by Zhilin Chen).



Figure S7. *Syscia chaladthanyakiji* Jaitrong, Wiwatwitaya & Yamane, 2020, holotype, worker (THNHM-I-05483). **A.** Head in full-face view. **B.** Label. **C.** Body in dorsal view. **D.** Body in lateral view (images cited from <https://www.antweb.org>; imaged by Yudthana Samung).

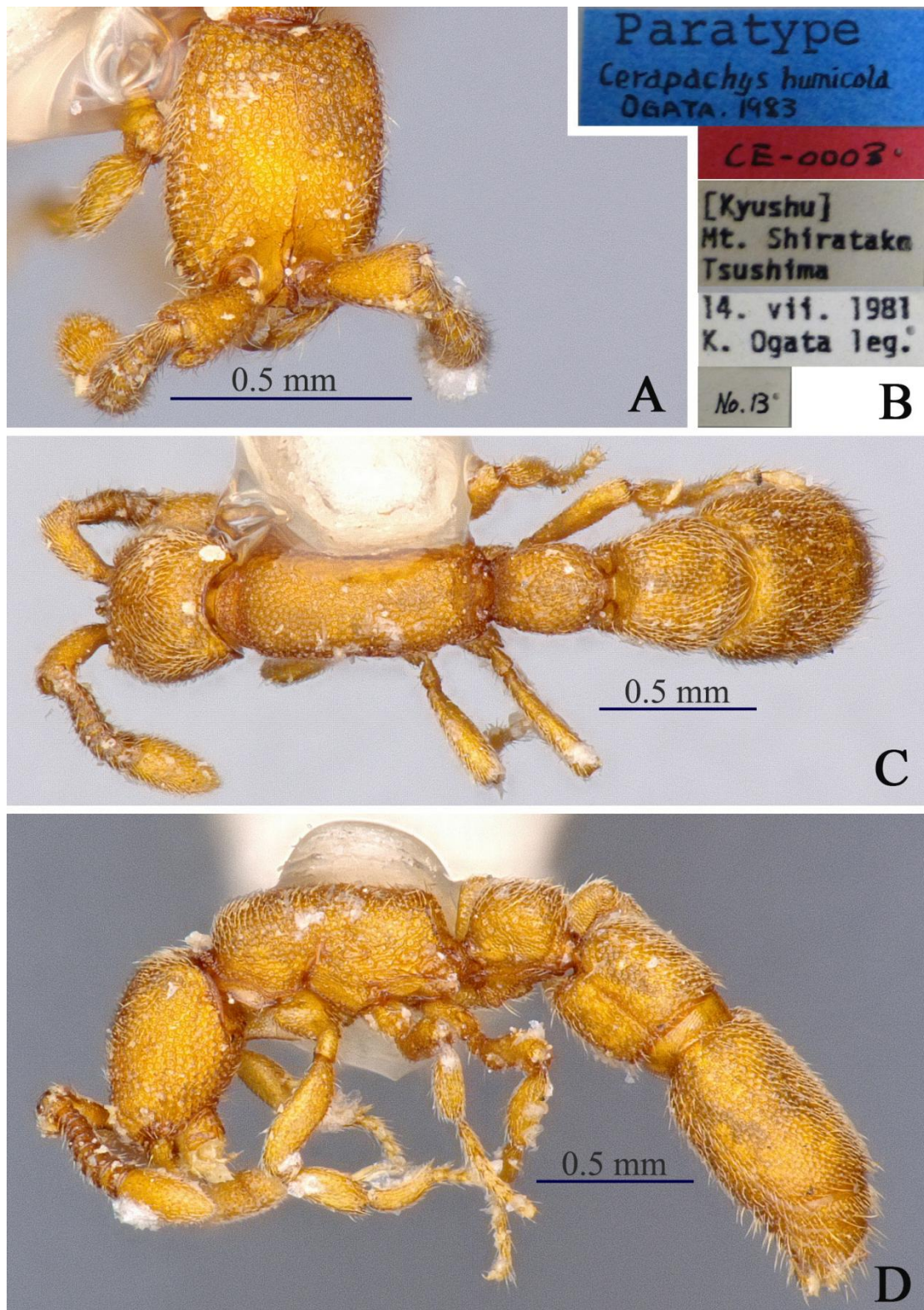


Figure S8. *Syscia humicola* (Ogata, 1983), paratype, worker. **A.** Head in full-face view. **B.** Body in dorsal view. **C.** Body in lateral view (imaged by Zhilin Chen).

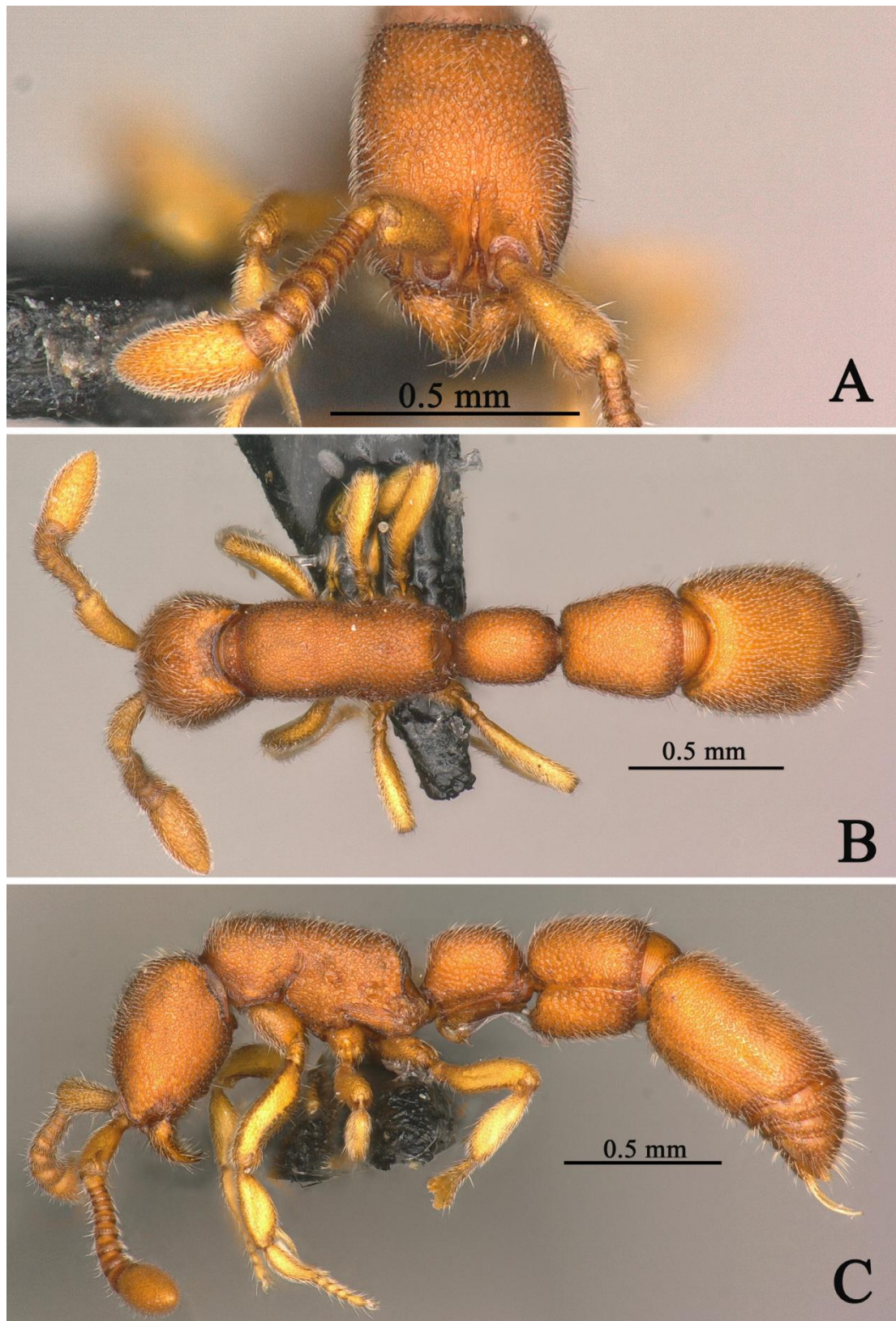


Figure S9. *Syscia guizhouensis* (Zhou, 2006), holotype, worker (No. G160363). **A.** Head in fullface view. **B.** Body in dorsal view. **C.** Body in lateral view (imaged by Zhilin Chen).



Figure S10. *Sycia indica* Aswaj, Sahanashree, Udayakantha, Aniruddha & Priyadarsanan, 2021, holotype, worker. **A.** Head in full-face view. **B.** Petiole and postpetiole in dorsal view. **C.** Body in dorsal view **D.** Body in lateral view (images cited from Aswaj et al. 2021).

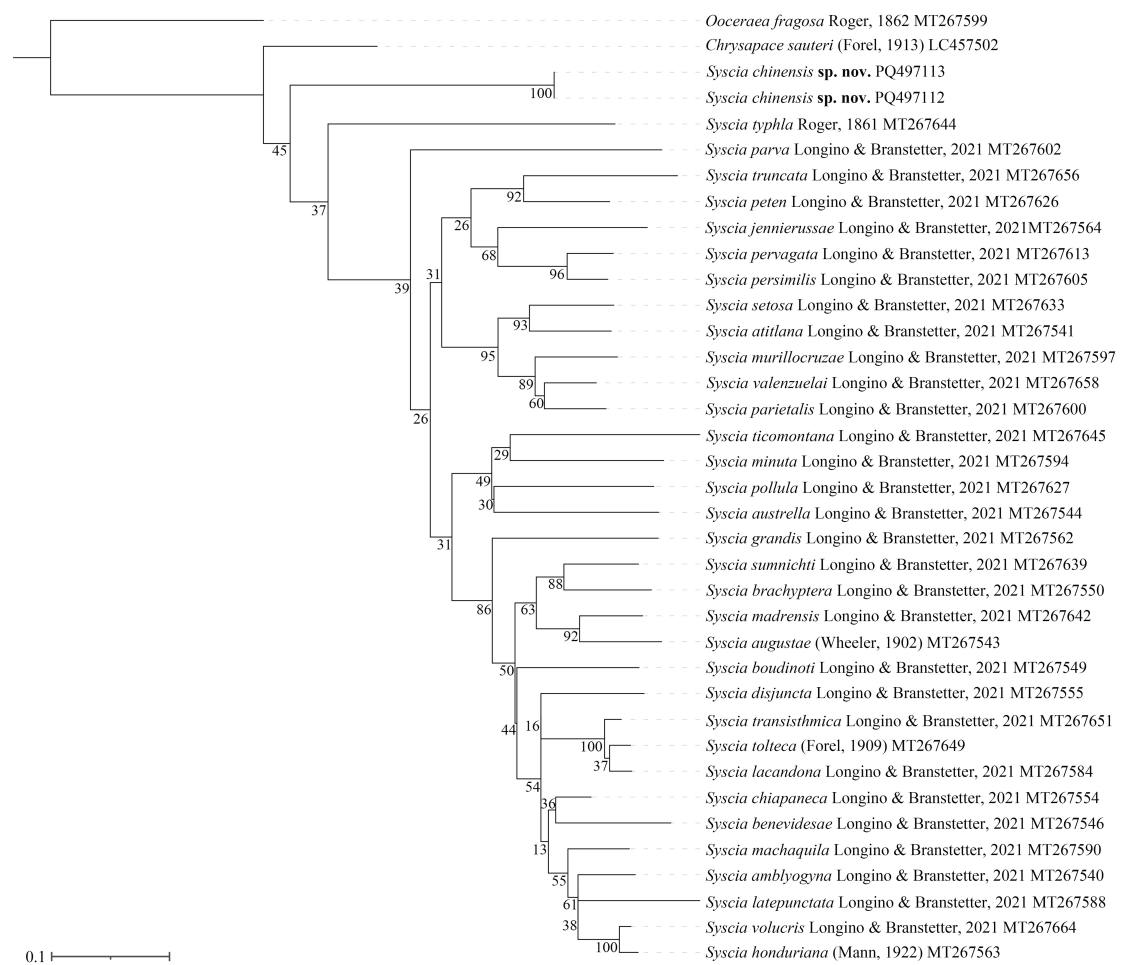


Figure S11. Maximum likelihood methods phylogenetic tree of *Syscia* species based on COI fragments.

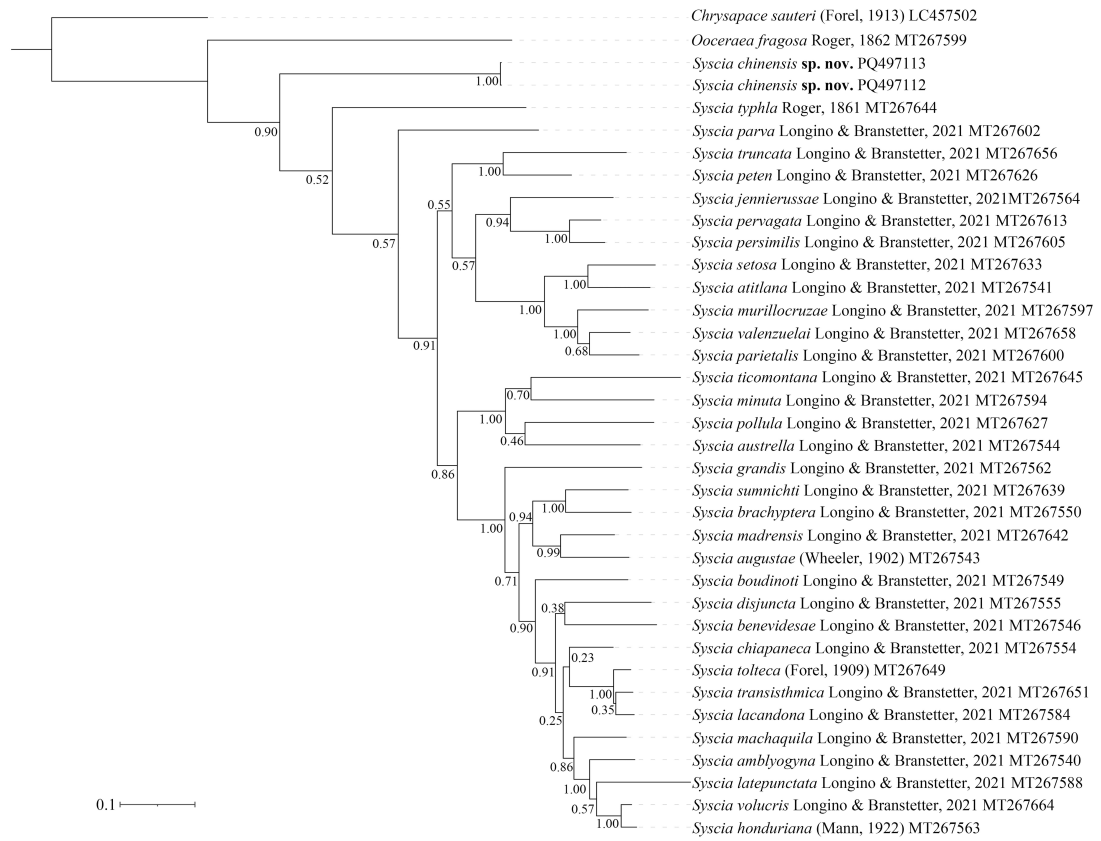


Figure S12. Bayesian inference phylogenetic tree of *Syscia* species based on COI fragments.