

The intramandibular gland of *Aneuretus simoni* (Formicidae, Aneuretinae)

JOHAN BILLEN* AND SEBASTIAAN VERBESSELT

KU Leuven, Zoological Institute, Naamsestraat 59,
box 2466, B-3000 Leuven, Belgium.

*Corresponding author's email: johan.billen@bio.kuleuven.be

ABSTRACT. *Aneuretus simoni* workers have a conspicuous intramandibular gland, formed by round to polygonal class-3 secretory cells with a diameter around 16-17 μm and their accompanying duct cells. Both in minor and major workers, approx. 8 cells open through the proximal upper surface of the mandible, approx. 12 cells open through the proximal lower surface. The secretory cells are characterized by a well-developed granular endoplasmic reticulum and Golgi apparatus. The cytoplasmic organization indicates the secretion has a proteinaceous nature, and therefore probably does not play a pheromonal role. The precise function, however, is not yet known.

Keywords: *Aneuretus simoni*, Aneuretinae, intramandibular gland, morphology, ultrastructure.

INTRODUCTION

Aneuretus simoni Emery, 1893 is endemic to Sri Lanka, and represents the only living representative of the subfamily Aneuretinae. The small polydomous colonies contain one or sometimes more dealate queens, up to 3 major and an average of 65 minor workers. The major workers are not involved in defence but rather play a role in food storage, whereas the minors are in charge of brood care, defence and foraging (Jayasuriya & Traniello 1985).

Because of its unique phylogenetic status together with its limited geographical distribution in southern Sri Lanka only, *A. simoni* has been included in the IUCN Red List as 'critically endangered' since 1996. This was later adjusted to 'endangered' (Fellowes & Brühl 2009), as more sites have been recently reported where the ants have been found (Dias *et al.* 2011, 2013; Dias & Ruchirani 2014). In all ant phylogenetic studies (e.g. Brown 1954; Wilson *et al.* 1956; Taylor 1978; Brady *et al.* 2006; Ward 2007; Moreau & Bell 2013), the Aneuretinae are considered the

sister group to the Dolichoderinae, based on fossil, anatomical as well as genetic grounds.

From the viewpoint of exocrinology, the close relationship between Aneuretinae and Dolichoderinae is supported by the presence of Pavan's gland, that is only found in these two subfamilies. We undertook a study of the exocrine system of *A. simoni*, and here report on the morphology and ultrastructure of their conspicuous intramandibular gland.

MATERIALS AND METHODS

During a visit to Gilimale Forest in southern Sri Lanka in December 1986, we collected a nest fragment of *Aneuretus simoni* in a decomposing fallen twig. This sample contained 16 minor and 4 major workers (note that published data mention a maximum number of 2 [Wilson *et al.* 1956] or 3 major workers per colony [Jayasuriya & Traniello 1985]). The anterior head parts of 13 minor and 2 major workers were fixed in 2% glutaraldehyde, buffered at pH 7.3 with 50 mM

Na-cacodylate and 150 mM saccharose. Postfixation was carried out in 2% osmium tetroxide in the same buffer. After dehydration in a graded acetone series, tissues were embedded in Araldite and sectioned with a Leica EM UC6 ultramicrotome. Semithin 1 μm sections were stained with methylene blue and thionin and viewed in an Olympus BX-51 microscope; 70 nm thin sections were double stained with lead citrate and uranyl acetate and examined in a Zeiss EM900 electron microscope. The heads of the remaining 3 minor and 2 major workers were mounted on stubs, coated with gold, and examined in a JEOL JSM-6360 scanning microscope.

RESULTS

Semithin sections through the mandibles of both minor and major workers revealed the presence of a prominent intramandibular gland (Fig. 1A,B). In both castes, the gland consists of approx. 20 rounded to polygonal class-3 cells according to the classification of Noirod and Quennedey (1974). The secretory cells have a diameter of $16.6 \pm 2.7 \mu\text{m}$ in minor ($n = 40$ cells measured) and $15.6 \pm 2.7 \mu\text{m}$ in major workers ($n = 7$ cells). Each cell is connected to its accompanying duct cell, thus forming a bicellular unit. Approx. 8 of these units open through the upper

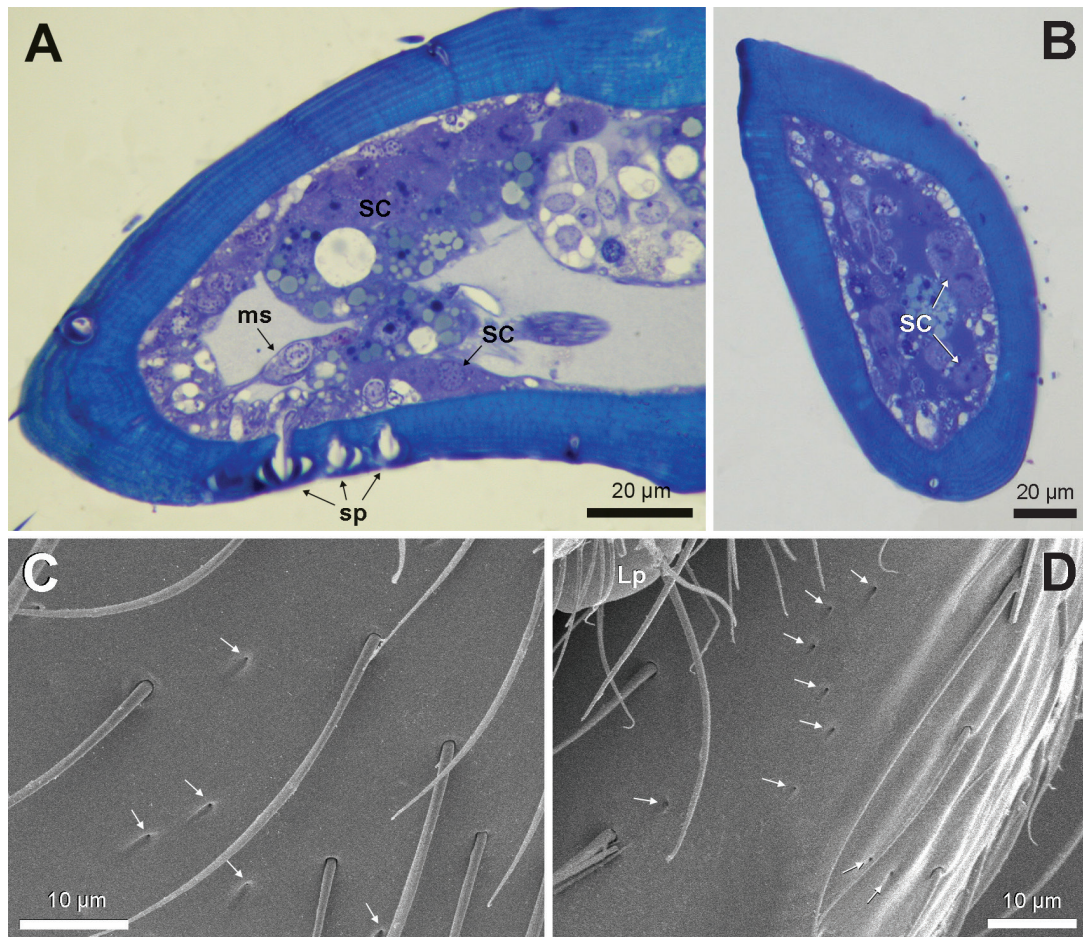


Fig. 1. **A.** Longitudinal section through mandible of minor worker, showing secretory cells (SC) underneath both upper and lower cuticle. ms: mandibular sensillae, sp: sensillar pores. **B.** Cross section through mandible of major worker with secretory cells (SC). **C,D.** Scanning micrographs of upper (C) and lower (D) part of proximal mandibular surface of minor worker, showing scattered openings of intramandibular gland ducts (arrows).

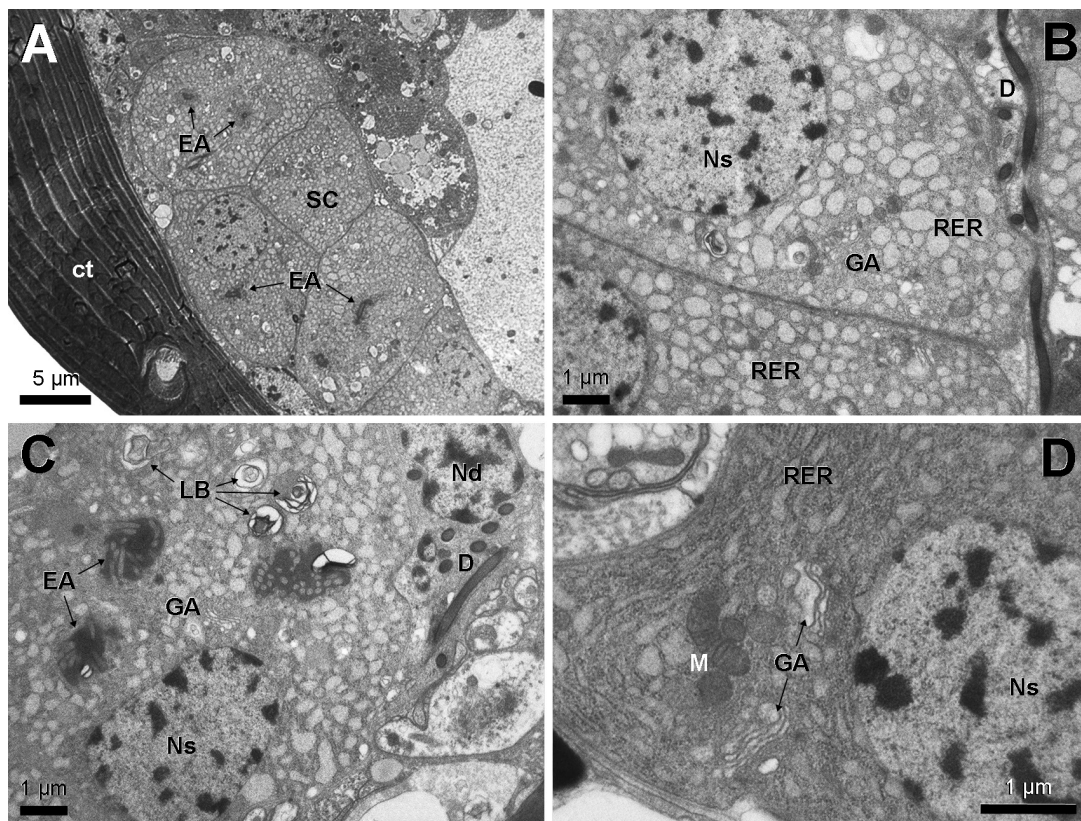


Fig. 2. Electron micrographs of intramandibular gland cells in minor workers. **A.** Low magnification view of upper secretory cells (SC), illustrating the highly vacuolar cytoplasm. **B.** Lower secretory cells and adjoining ducts (D), showing well-developed granular endoplasmic reticulum (RER) and Golgi apparatus (GA). **C.** Detail of upper secretory cells with sections through end apparatus (EA) and lamellar bodies (LB). **D.** Cytoplasmic detail of upper secretory cell with granular endoplasmic reticulum (RER), Golgi apparatus (GA) and mitochondria (M). ct: cuticle, Nd: nucleus duct cell, Ns: nucleus secretory cell.

surface of the mandible, whereas the other 12 open through the lower surface. Scanning microscopy shows the duct openings in the proximal half of the mandibular surface as isolated pores with a diameter around $0.25\ \mu\text{m}$ (Fig. 1C,D). Counts of the number of pores are in line with the number of secretory cells as estimated from the serial semithin sections.

Electron microscopy shows that both the upper and lower cells have a highly vacuolar cytoplasm and a rounded nucleus with a diameter around $5\ \mu\text{m}$ (Fig. 2A). At higher magnification, the vacuolar organization corresponds with a well-developed granular endoplasmic reticulum, that is mostly of the vesicular type (Fig. 2B,C), but that also occurs in the tubular type (Fig. 2D).

The cytoplasm also contains a well-developed Golgi apparatus but rather few mitochondria (Fig. 2B,D). Each secretory cell has a curved end apparatus with clear microvilli, as can be understood from the 2-3 times it appears on a section (Fig. 2A,C). In the vicinity of the end apparatus, lamellar inclusions with a diameter of $1\ \mu\text{m}$ can be found (Fig. 2C). The duct cells have a very reduced cytoplasm, and are mainly made up by the sclerotized ductule, through which the secretory products are transported to the outside. The ductule wall has a thickness around $0.1\ \mu\text{m}$ and an internal diameter around $0.25\text{--}0.5\ \mu\text{m}$ (Fig. 2B,D).

DISCUSSION

Social insects in general, and ants in particular, are known for their extremely diversified exocrine system. The number of known glands for all social insects together is currently 149, of which 84 are reported for ants (Billen & Šobotník 2015). Intramandibular glands formed by class-3 secretory cells are a fairly common exocrine structure in ants, where they were first described by Schoeters and Billen (1994), and later also found by Grasso *et al.* (2004), Amaral and Caetano (2006) and Martins and Serrão (2011). They have also been described in stingless bees (Costa-Leonardo *et al.* 1978) and recently also in wasps (Penagos-Arévalo *et al.* 2015). Besides the class-3 intramandibular gland cells, Costa-Leonardo *et al.* (1978) also reported on the occurrence of an intramandibular gland in some meliponine bees made up of class-1 cells. We also found such epithelial intramandibular glands with class-1 cells in *Strumigenys (Pyramica) membranifera* (Billen & Espadaler 2002) and in *Protanilla wallacei* (Billen *et al.* 2013). The structural variation of intramandibular glands is further illustrated by the occurrence in *Tatuidris tatusia* of class-3 secretory cells, but here the cells do not open through isolated pores on the mandibular surface, but through a single pore plate at the ventral proximal side of each mandible (Billen & Delsinne 2014).

The function of intramandibular glands remains poorly understood so far. The only clearly illustrated function is that of substrate marking in order to recruit nestmates as shown by Roux *et al.* (2010) for the class-3 intramandibular gland in the weaver ant *Oecophylla longinoda*. Such pheromonal function goes along with the elaboration of small non-proteinaceous molecules, which in turn corresponds with the presence of a well-developed smooth endoplasmic reticulum, as usually found in intramandibular gland cells (Schoeters & Billen 1994). Our finding of a clear granular endoplasmic reticulum in *Aneuretus simoni*, however, supposes the production of a proteinaceous and hence non-pheromonal secretion. Glycoprotein synthesis was already reported for the intramandibular glands of leaf-cutting ants (Amaral & Caetano 2006), while Martins *et al.* (2015) also found clear protein presence in *Atta*

laevigata workers. The real function of such a secretion, however, remains unknown. The presence of lamellar bodies is commonly found in exocrine glands (Billen 1991), and may be regarded as a lipidic secretion (Boudreau *et al.* 1983). A peculiarity of the intramandibular gland of *A. simoni* is that the secretory cells discharge their secretion both through the upper and lower side of the mandible, whereas in most ants they open through the upper surface (Schoeters & Billen 1994). The opening at both sides may be linked with a more pronounced distribution of the glandular secretion. The similar development of the intramandibular gland in both minor and major workers indicates the gland does not have a caste-specific function, although careful observations of special mandibular movements and use of mandibular extracts will be needed to clarify the function of this gland in these ants.

ACKNOWLEDGEMENTS

We very much acknowledge the skilful help of An Vandoren in section preparation and of Alex Vrijdaghs in scanning microscopy. Our sincere thanks also go to Lakshman Weeratunge and Athula Attygalle for their help in collecting the ants, and to Adam Cronin and José Serrão for helpful comments on the manuscript.

REFERENCES

- Amaral JB and Caetano FH, 2006. The intramandibular gland of leaf-cutting ants (*Atta sexdens rubropilosa* Forel 1908). *Micron* 37: 154-160.
- Billen J, 1991. Ultrastructural organization of the exocrine glands in ants. *Ethology, Ecology and Evolution, special issue 1*: 67-73.
- Billen J and Espadaler X, 2002. A novel epithelial intramandibular gland in the ant *Pyramica membranifera* (Hymenoptera, Formicidae). *Belgian Journal of Zoology* 132: 175-176.
- Billen J and Delsinne T, 2014. A novel intramandibular gland in the ant *Tatuidris tatusia* (Hymenoptera: Formicidae). *Myrmecological News* 19: 61-64.
- Billen J and Šobotník J, 2015. Insect exocrine glands. *Arthropod Structure and Development* 44: 399-400.

- Billen J, Bauweleers E, Hashim R and Ito F, 2013. Survey of the exocrine system in *Prostanilla wal-lacei* (Hymenoptera, Formicidae). *Arthropod Structure and Development* 42: 173-183.
- Boudreau J, Beaudoin AR and Nadeau D, 1983. Sequential isolation of lamellar bodies and surfactant fractions from rat lungs. *Canadian Journal of Biochemistry and Cell Biology* 61: 231-239.
- Brady SG, Fisher BL, Schultz TR and Ward PS, 2006. Evaluating alternative hypotheses for the early evolution and diversification of ants. *Proceedings of the National Academy of Sciences U.S.A.* 103: 18172-18177.
- Brown WL Jr, 1954. Remarks on the internal phylogeny and subfamily classification of the family Formicidae. *Insectes Sociaux* 1: 21-31.
- Costa Leonardo AM, 1978. Glândulas intramandibulares em abelhas sociais. *Ciência e Cultura* 30: 835-838.
- Dias RKS, Peiris HAWS and Ruchirani HPGRC, 2011. Discovery of *Aneuretus simoni* Emery in a disturbed forest in Kalutara, and *Stereomyrmex horni* Emery in Anuradhapura Sanctuary, Sri Lanka. *Asian Myrmecology* 4: 99-102.
- Dias RKS, Ruchirani HPGRC, Kosgamage KRKA and Peiris HAWS, 2013. Frequency of nest occurrence and nest density of *Aneuretus simoni* Emery (Sri Lankan Relict Ant) and other ant fauna in an abandoned rubber plantation (Kirikanda Forest) in southwest Sri Lanka. *Asian Myrmecology* 5: 59-67.
- Dias RKS and Ruchirani HPGRC, 2014. Nest density of *Aneuretus simoni* Emery (Sri Lankan Relict Ant) and *Stereomyrmex horni* Emery in three forest regions in western and southern Sri Lanka. *Asian Myrmecology* 6: 83-90.
- Fellowes J and Brühl K, 2009. Ants and the Red List – time for a global assessment? ANeT 2009, Cibodas, Indonesia.
- Grasso DA, Romani R, Castracani C, Visicchio R, Mori A, Isidoro N and Le Moli F, 2004. Mandible associated glands in queens of the slave-making ant *Polyergus rufescens* (Hymenoptera, Formicidae). *Insectes Sociaux* 51: 74-80.
- Jayasuriya AK and Traniello JFA, 1985. The biology of the primitive ant *Aneuretus simoni* (Emery) (Formicidae: Aneuretinae). I. Distribution, abundance, colony structure, and foraging ecology. *Insectes Sociaux* 32: 363-374.
- Martins LCB and Serrão JE, 2011. Morphology and histochemistry of the intramandibular glands in Attini and Ponerini (Hymenoptera, Formicidae) species. *Microscopy Research and Technique* 74: 763-771.
- Martins LC, Della Lucia TMC, Gonçalves WG, Delabie JH, Zanuncio JC and Serrão JE, 2015. Intramandibular glands in different castes of leaf-cutting ant, *Atta laevigata* (Fr. Smith, 1858) (Formicidae: Attini). *Microscopy Research and Technique* 78: 603-612.
- Moreau CS and Bell CD, 2013. Testing the museum versus cradle tropical biological diversity hypothesis: phylogeny, diversification, and ancestral biogeographic range evolution of the ants. *Evolution* 67: 2240-2257.
- Noirot C and Quennedey A, 1974. Fine structure of insect epidermal glands. *Annual Revue of Entomology* 19: 61-80.
- Penagos-Arévalo AC, Billen J and Sarmiento CE, 2015. Uncovering head gland diversity in Neotropical Polistinae wasps (Hymenoptera, Vespidae): Comparative analysis and description of new glands. *Arthropod Structure and Development* 44: 415-425.
- Roux O, Billen J, Orivel J and Dejean A, 2010. An overlooked mandibular-rubbing behavior used during recruitment by the African weaver ant, *Oecophylla longinoda*. *PloS ONE* 5: e8957.
- Schoeters E and Billen J, 1994. The intramandibular gland, a novel exocrine structure in ants (Insecta, Hymenoptera). *Zoomorphology* 114: 125-131.
- Taylor RW, 1978. *Nothomyrmecia macrops*: a living-fossil ant rediscovered. *Science* 201: 979-985.
- Ward PS, 2007. Phylogeny, classification, and species-level taxonomy of ants (Hymenoptera: Formicidae). *Zootaxa* 1668: 549-563.
- Wilson EO, Eisner T, Wheeler GC and Wheeler J, 1956. *Aneuretus simoni* Emery, a major link in ant evolution. *Bulletin of the Museum of Comparative Zoology at Harvard College* 115: 81-99.

ASIAN MYRMECOLOGY

A Journal of the International Network for the Study of Asian Ants

Communicating Editor: Adam L Cronin